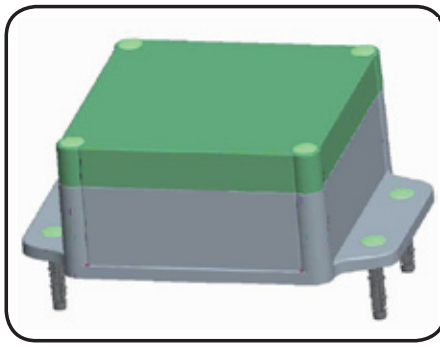


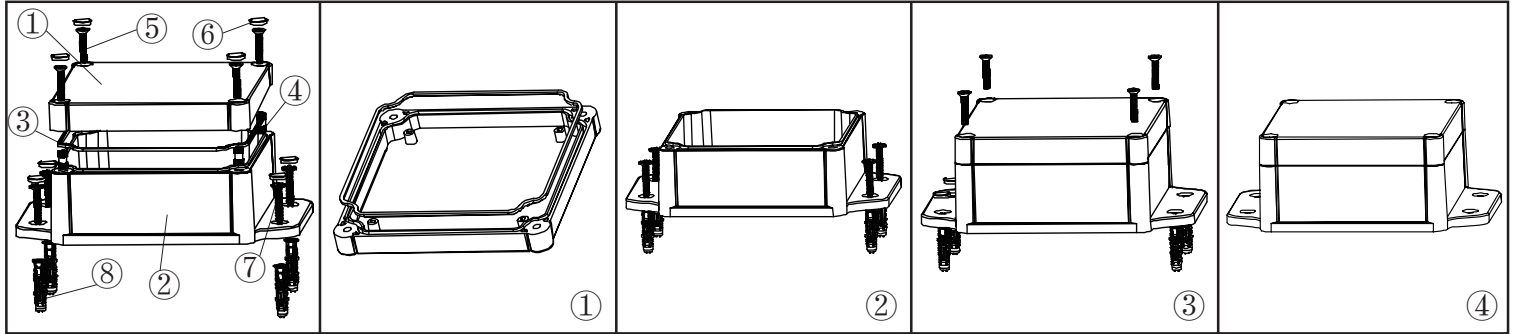
产品型号(MODEL NO.): BWP 10011-A1

产品尺寸 (SIZE): 168×120×61MM

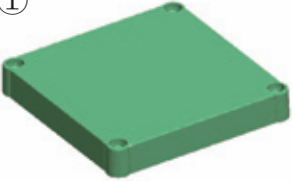
产品重量(WEIGHT):



1 1 2 2 2 0 2 0

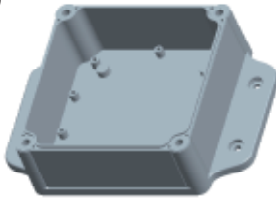


①




产品编号(NUMBER): 10011-B1
 产品名称(NAME): 上壳 EPIVALVE
 模具编号 (P/NO) : BAH10024-B2
 材料(MATERIAL): ABS(LIGHT GREY:FS20412)
 用量(QUANTITY): 1 PCS
 重量(WEIGHT):

②




产品编号(NUMBER): 10001-C1
 产品名称(NAME): 下壳 HYPOTHECA
 模具编号(P/NO): BAH10024-A1
 材料(MATERIAL): ABS(LIGHT GREY:FS20412)
 用量(QUANTITY): 1 PCS
 重量(WEIGHT):

③




产品编号(NUMBER): 10001-D1
 产品名称(NAME): 防水圈 GASKET
 材料 (MATERIAL): 橡胶 RUBBER
 用量(QUANTITY): 1 PCS
 尺寸 (SIZE): 113x113x1.8 MM
 重量(WEIGHT):

④



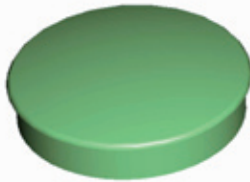
产品编号(NUMBER): M4×10
 产品名称(NAME): 铜套 COPPER NUT
 规格(STANDARD): M4×10
 材料(MATERIAL): 铜 COPPER
 用量(QUANTITY): 4 PCS
 颜色 (COLOR): 铜色 COPPER

⑤




产品编号(NUMBER): KM4×25
 产品名称(NAME): GRUB SCREW
 规格(STANDARD): M4×25
 材料(MATERIAL): STAINLESS STEEL
 用量 (QUANTITY): 4 PCS

⑥




产品编号(NUMBER): KN-500-B1
 产品名称(NAME): 螺丝盖 SCREW LID
 模具编号(P/NO): BAH10001-A3
 材料(MATERIAL): ABS(LIGHT GREY:FS20412)
 用量(QUANTITY): 8 PCS

⑦



产品编号(NUMBER): PWA4×30
 产品名称(NAME): 自攻螺丝 SELF-TAPPING SCREW
 规格(STANDARD): M4×30
 材料(MATERIAL): 铁 IRON
 用量(QUANTITY): 4 PCS

⑧



产品编号(NUMBER): S-6
 产品名称(NAME): 墙钉 WALL NAIL
 模具编号(P/NO): BAH10032-A1A2
 规格(STANDARD): S×6 φ4-5
 材料(MATERIAL): PP(GREY:CM906)
 用量(QUANTITY): 4 PCS

名称 NAME	尺寸 SIZE (MM)	CARTON No.	G . W (KG)	N . W (KG)	每箱数量 QUANTITY	PE袋 POLYBAG
小箱 SAML CARTON						
大箱 BIG CARTON						